



Contexts analyzed

Units 1,2,3,6,7,10,11,12,14,15

House 44 – kitchen in Unit 10? 5 samples

Unit 12 – tomb association

Representation by Taxon: Wood

94% Ubiquity

Highest – Units 10,14,15

Lowest – Units 6, 7



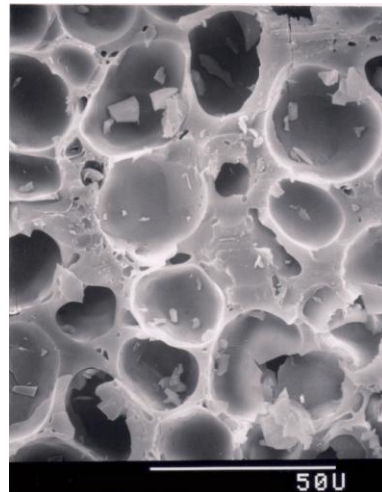
Parenchyma

44% ubiquity

Highest – Units 10,15

Absent – Units 1,2,3,14

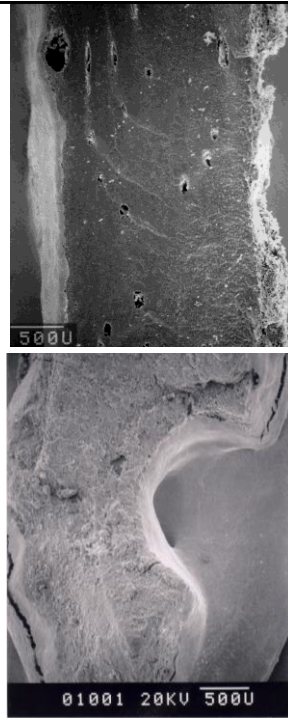
From banana, yam?



Coconut

50% ubiquity

Absent: Units 3,6,14,15



Coconut shell – endocarp (Chwaka)

Fruit/Nut

56% ubiquity

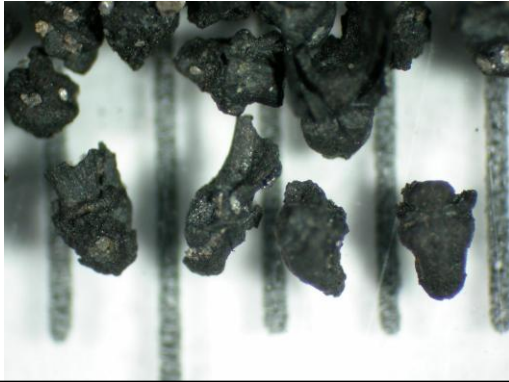
Unit 10 – 100% ubiquity

Absent – Units 1,2,15

Asian Rice and chaff

17% ubiquity – only U 10 (rachillae – n=14)
and Unit 7 (grain fragments SNE=1)

Rice rachillae (Chwaka)



Rice grain (Chwaka)



African Millet and Grass

Millet – 17% ubiquity (Unit 10,15)

Grass – 11% ubiquity (Unit 10, 12)

Digitaria – Unit 15 (n=1)

Digitaria (Gambia)



Sorghum (Chwaka)



Cotton (Baobab?)

50% ubiquity

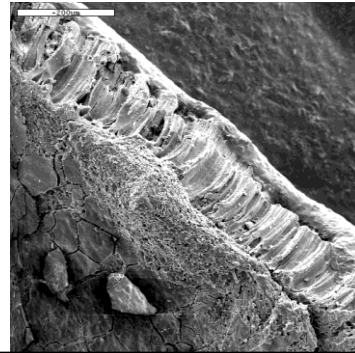
Highest – Units 10,15

Absent – U 1,2,3,6,7



Baobab (Gambia)

Cotton (Chwaka)



Beans

28% ubiquity

Present – Units 1,7,10,15

Vigna – Units 10 (10033),15

Vicia faba – Unit 10 (10033)

Pisum ? uncarbonized

V. unguiculata (Gambia)



Wild and Weedy Greens

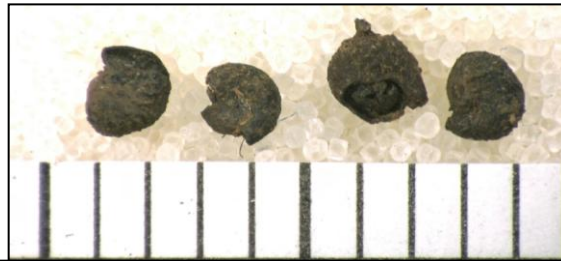
Portulaca cf. *oleracea* – 33% ubiquity

Polygonum – 6%

cf. *Silene* – 6%

Caryophyllaceae – 6%

Portulaca (Gambia)



Unidentified Seeds, Fragments

94% ubiquity

Plant Use Patterning - Domestic



House 44

Unit 10 (back room)

- plant processing – likely storage
- richness due to depositional, preservation, or taphonomic factors?

Units 1,2,3,6 - botanicals in other parts of house

House 23

Unit 14 (courtyard)

- wood fragments from burnt stump

Unit 15 (inner room)

- relatively rich in botanicals (millet, cotton, *Vigna*)

Plant Use Patterning cont'd



Household at Unit 11?

modest archaeobotanical findings

Ritual Areas

Tomb

Unit 12 – burning of foods? (wood charcoal, coconut, fruit/nut, parenchyma, grass chaff)

Conclusions

High resolution plant use patterning

Drier coastal environment – millets

Rice limited, but significant

Acknowledgements

SFU Archaeology – Cathy D’Andrea, Billi-Jo
Cavanaugh

Songo Mnara project leaders, students, staff
SSHRC (Pistor travel funds)

SFU

